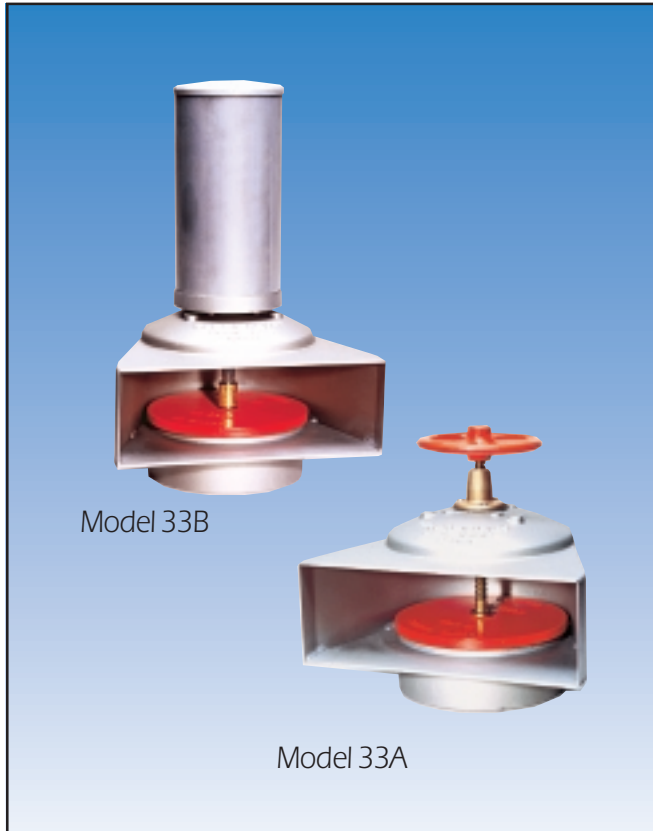


## SERIES 3300 DAIRY VALVE

### TECHNICAL DATA SHEET



#### Features

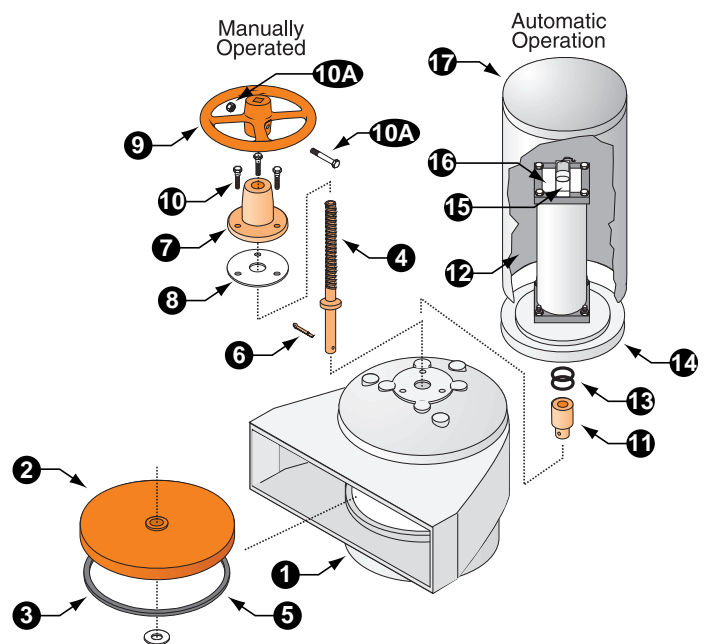
- Rugged Aluminum body provides exceptional corrosion resistance.
- Standard handwheel operator.
- Rectangular outlet design provides directional flushing.
- Brass screw with acme thread for smooth, fast opening and closing (Model 33A).
- Spigot type base design for easy attachment to plastic pipe.
- Resilient seat assures watertight closure.
- Brass & Stainless components provide lasting protection from corrosion.

#### Series 3300 Dairy Valve

##### Material Specifications

Item	Description	Material	Specification
1	Body	Aluminum	ASTM B26-65, Alloy C564D
2	Cover	Cast Iron	ASTM A126, Class B
3	Cover Gasket	SBR	ASTM D2000
4	Screw	Brass	ASTM B16
5	Washer	Brass	ASTM B19, Alloy 260
6	Cotter Pin	Brass	ASTM B16
7	Lift Nut	Brass	ASTM B584, Alloy 844
8	Gasket	Neoprene	N/A
9	Handwheel	Cast Aluminum	ASTM B-26-65, Alloy C564D
10	Lift Nut Fasteners	Stainless Steel	ASTM A276, Type 304
10a	Handwheel Nut & Bolt	Steel Plated	ASTM A307 A164
*11	Cylinder Rod Adaptor	Brass	ASTM B16
*12	Air Cylinder	Plastic	N/A
*13	O-Rings	Buna-N	ASTM D2000
*14	Cylinder Adaptor	Aluminum	ASTM B26-65, Alloy C564D
*15	Solenoid Valve	Various	N/A
*16	Solenoid Plate	Aluminum	ASTM B209
*17	Cylinder Cover	Aluminum	ASTM B26-65, Alloy C564D

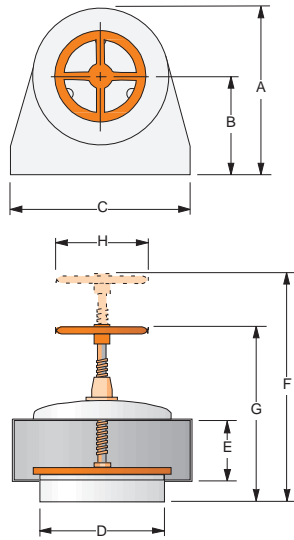
\*Model 33B only



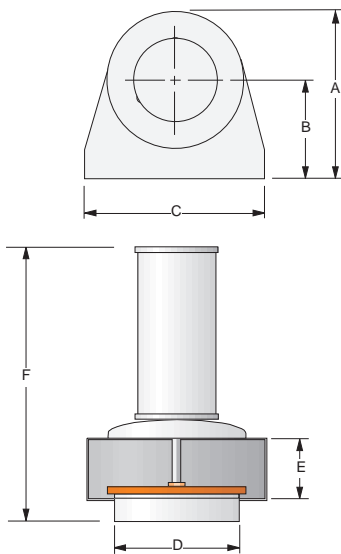
#### Applications

The Series 3300 Dairy Valves are designed for flushing concrete slabs and alleys in dairies or other livestock facilities with large volumes of water at low pressure for cleaning purposes.

## SERIES 3300 DAIRY VALVE



**Model 33A**



**Model 33B**

### Pressure Rating

Dairy Valve ..... 35 ft. (15 psi) max. water pressure  
 \*Air cylinder ..... 200 psi max. air pressure  
 \*Minimum recommended air pressure to the cylinder is 10 times the maximum design water pressure and not less than 80 psi.

### Installation

Series 3300 Dairy Valves are designed for use with 100' head plastic irrigation pipe (PIP). The outside of the valve spigot is epoxied to the inside of the plastic pipe. Draw bands may be used to provide additional strength at the joint.

### Models Available

Model 33A - 12" Manually operated handwheel  
 Model 33B - Air cylinder actuated\*\*  
 \*\*Solenoid voltage - 24 VAC, 60Hz.  
 (Optional voltage - 120 VAC, 50/60 Hz.)

### Options

- Air operated.
- Pipe risers and adaptors for various types of plastic pipe.
- Factory installed risers and adaptors.

### Dimensional Information

Valve Size	Model Number	Dimensions (Inches)							
		A	B	C	D	E	F	G	H
12"	33A	16.00	9.44	19.0	11.84	7.0	26.0	19.5	8.62
12"	33B	16.00	9.44	19.0	11.84	7.0	26.5	-	-



**Fresno Valves & Castings, Inc.**  
 7736 East Springfield Avenue  
 P.O. Box 40, Selma, CA 93662, U.S.A.  
**(800) 333-1658**  
 www.fresnovalves.com